



**The surveying and geomatics
company that's **down-to-earth.****

Dedicated to the land and technologies that shape it.



Our partnership promise / We are:



Responsive

We are quick.

With an impressive bench strength, we're quick to quote, to get to site, to address challenges and to get the job done on-time and on-budget.



Industry Experts

We have the skills you need.

With team members working in different industries all across the country, we've got a knowledge base that's undeniable.



Solutions-Oriented

We solve problems.

We ask questions, investigate and provide the best solution for your individual project needs.



Trustworthy

We are reliable.

Like any great partner, you can count on us. We provide safe, dependable, quality service.





The GeoVerra Difference

GeoVerra was built on one founding principle –to provide outstanding service. First and foremost, we are a service organization that thrives on exceeding expectations and creating lasting relationships that clients can depend on. It's what sets us apart and makes us leaders in land surveying, engineering, mapping, forestry, environmental consulting and geospatial solutions.

We're driven by an entrepreneurial spirit and a relentless work ethic that pushes us to take initiative, developing advanced, customized solutions for clients in diverse sectors from industry to government. Those solutions give our clients a decided advantage and enable us to continually advance the field as we deliver industry-leading solutions in spatial intelligence. In all we do, safety comes first. It's a group effort. We pride ourselves on highly coordinated teamwork for complete peace of mind in the field and beyond.

Our team-oriented approach extends to how we work with our clients too. We view ourselves as strategic partners, focused solely on achieving client objectives through seamless collaboration and providing seasoned expertise they can rely on.

The confidence our clients have in us stems from our actions, values and ethics put into practice. We're truthful, open and honest, and with that comes trusted partnerships. Clients know we're committed to exceeding expectations with our service-backed reputation for responsive, efficient, solutions-based performance every step of the way. It's what we like to call the partnership promise.



Vision

To be the leading geomatics company, shaping the future of the industry.



Mission

To provide industry-leading geomatics services that employees are truly proud of and that clients recommend to others.



Values

Our values are at the core of who we are and what we do; teamwork, safety, clients, trust and excellence. They keep us focused on our goals and the promises we make to each other and our stakeholders.





Community Partnerships & Sustainability

For us, success goes beyond project performance. It includes the initiatives that drive our vision as forward-thinkers and enrich those around us for generations to come. We are serious about environmental and social responsibility. Because of this, our community partnerships play a key role in the decisions we make every single day.

GV Gives Back

Each year, we allocate a budget to help all of our team members give back through donations to the organizations they volunteer with. Our hope is that this program will encourage GV employees to be active in their communities in a positive way. 

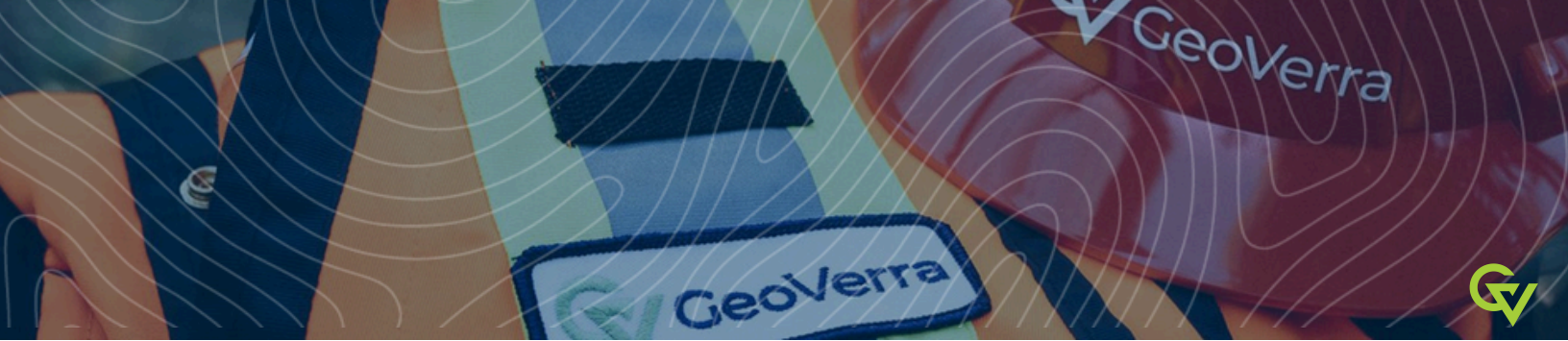
Indigenous Commitment

GeoVerra recognizes the importance and is committed to positive, mutually beneficial partnerships and working relationships with Indigenous Peoples across Canada. Across our business, we know there are opportunities to listen, learn, reflect and take action to support Reconciliation through our work with clients, communities, and industry associations. We have a long and successful history working with Indigenous groups on large-scale projects, and our goal as partners is to provide training, mentoring, and employment opportunities. Through projects that create mutually improved economic opportunities, we are increasing our awareness and ability to support initiatives that bring lasting improvement to the quality of life for everyone.

Sustainability Responsibility

As one of Canada's largest surveying and geomatics firms, we want to set the bar high as industry leaders and encourage our peers to do the same. We are committed and recognize the importance of sustainability and social responsibility to our communities and clients. To support sustainable projects, GeoVerra introduced a sustainable energy division, focused on providing surveying, forestry and environmental, and advanced technology solutions to projects within the alternative energy sector, including carbon capture, hydrogen production and storage, and solar and wind. We are excited to have leadership team personnel appointed to focus on our sustainability initiatives and goals, as well as work on an inventory of our GHG emissions with the intent of goals setting and reduction.





Health & Safety at GeoVerra

GeoVerra recognizes that working safely is an integral part of a project, but that's not the only reason why we live and breathe it. We're particular about working safely because we know that it enables a positive working culture and high-quality project performance. On all our operations, from British Columbia to Ontario, you'll see an elevated industry standard for health and safety.

Best in Class Safety Program

Our Health, Safety and Environment (HSE) Program is GeoVerra's standard for managing health, safety and the environment. Commitment to HSE protects our people, helps drive superior business performance and continues to build a positive health and safety culture and promote our pursuit of an incident free workplace.

Our program's goal is to minimize risks by providing clear and concise policies and procedures, organizational roles and responsibilities, and arrangements for implementation that applies to all areas of our operations across all projects and offices.

Working Safely - Our Core Value

Working safely is our contract with one another, we owe it to each other to get home safely every day. GeoVerra is bound by the badge of S.A.F.E. It reminds us of the value of working safely and the importance of safety and guides our actions and behaviour on site.

- Stop and think.
- Assess the risks.
- Follow procedures.
- Engage everyone.



Performance & Awards

- Three-year Total Recordable Injury Frequency (TRIF) average: 0.50
- Annual WCB premium rates are below provincial industry averages and accounts are in good standing.
- Certificate of Recognition (COR): 97 % on most recent External COR Audit
 - Energy Safety Canada is our certifying partner.
 - COR Certified: BC to ON
- Canada's Safest Employer Awards Shortlisted Finalist in two categories:
- Canada's Safest New Employer, 2023
 - Most Innovative Use of Safety Technology in Canada, 2023
 - OHS Canada Magazine's Honours Awards | Best
- OHS Canada Magazine's Honours Awards | Best Safety Communications Program | 2023 Silver Winner

Capacity & Locations

23

locations across the country, we are one of Canada's largest geomatics firms providing land surveying, forestry, environmental, and geospatial solutions to clients.





What We Do



Please note, this is not a comprehensive list of solutions and the services listed may not be offered in all of our locations. Contact us at info@geoverra.com for details.





Providing Solutions for Every Sector

GeoVerra's team of surveyors, project managers, field crews, CAD specialists, natural resource professionals, and so many others provide responsive, efficient, and custom solutions to a wide range of industries and project sizes throughout Western Canada and Ontario.

Industrial & Construction

Sustainable Energy

Transportation

Municipal

Tunneling

Oil & Gas

Utilities

Mining



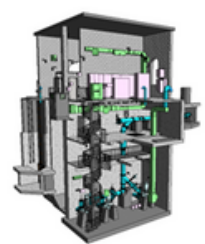


Geospatial Technologies / Reality Capture Methods

Mapping and GIS

Data Management & Online Portal

Our industry-leading experts present data to our clients in rich, engaging, and easy-to-understand visual formats, delivering insights that support effective decision-making and drive projects forward on time and on budget.



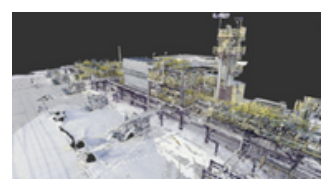
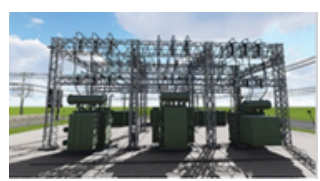
We collect, comb, filter, and display project information in one place so that our clients can make meaningful data-driven decisions. Whether you need a standardized solution (GV View) or a custom portal, our data visualization programs can help you design and build with confidence.



3D Scanning

Terrestrial & Aerial Data Capture

3D scanning allows us to collect thousands of data points per second, in great detail. This survey method is not only unobtrusive, safe, and efficient, but also exceptional at capturing information in challenging physical environments and hard-to-reach spaces. It also provides a means of storing critical geospatial data so that clients can make informed decisions and optimize operations.



Unmanned Aerial Vehicles (UAV) & LiDAR

High resolution imaging

Unmanned aerial imaging is a proven and trusted technique for collecting precise geospatial data with remote (LiDAR), photogrammetry (RGB), multi-spectral and thermal sensors. UAVs help us perform quick, high-definition surveys (HDS) across large, complex, and even hazardous areas while keeping everyone out of harm's way. Thermal imaging and zoom photography are used for our inspection services. Using the latest fixed-wing and diverse fleet of multi-rotor drones, our licensed pilots can fly different types of payloads, and acquire, process and deliver wide range of solutions and products.



Mobile Mapping System (MMS)

Dense point cloud, high accuracy, long range for survey & engineering projects

For large infrastructure projects, conventional surveying can be tedious. While there's a time and a place for traditional surveying, GeoVerra embraces technology, like mobile mapping, to advance the industry.



GeoVerra uses the Trimble MX50 – a complete mobile mapping solution that combines leading edge hardware with intuitive field software and a powerful, integrated office software workflow.

- Combines long range LiDAR, spherical imagery and oblique cameras along with best-in-class inertial sensors
- Rapidly captures laser scans and images, both panoramic and multi-angle, as you drive



GeoVerra Project Experience

Pipeline / Trans Mountain Expansion



Location: Edmonton, AB to Burnaby, BC

Client: Trans Mountain

Services:

- Pre-legal and engineering
- Access Road Crossing Identifier (AXID)
- Regulatory surveys and plan preparation
- Pre-construction surveys
- Construction, as-built surveys, and legal surveys
- Mobile mapping, UAV and LiDAR support
- Automated 24-hour road and rail monitoring

Project Description

Trans Mountain Corporation received approval from the Government of Canada in June of 2019 to move forward with the Trans Mountain Expansion Project (TMEP). As the largest project in the pipeline's history, it will twin the existing 1,150 km of pipeline running from Edmonton, AB to Burnaby, BC to increase capacity by about 3-fold.

The project scope encompasses reactivating 193 km of pipeline and installing approximately 980 km of new pipeline. In addition, new and modified facilities will be constructed including pump stations, storage terminal tanks, and a new dock complex at the Westridge Marine Terminal in Burnaby to increase tanker capacity. The existing pipeline will carry refined products, synthetic and light crude oils with the capability for heavy crude oils, and the new pipeline will carry heavier oils with the capability for transporting light crude oils.

Why GeoVerra?

Several of GeoVerra's team members have been working closely with the TMEP Engineering group for over 10 years, delivering efficient, reliable results. The credibility built through a deep knowledge of pipeline work and the partnerships fostered both with TMEP and First Nations groups were key to GeoVerra being awarded the survey work.

As Canada's largest geomatics firm, GeoVerra has the offices, resources, and teams to meet the needs of large, high-profile pipeline projects like the TMEP. Not only has GeoVerra supplied the personnel required to get the job done, but they are responsive in their approach, adapting to client requirements as the need for crews ebbs and flows. The GeoVerra team working on the TMEP includes up to 40 survey crews and 50 support staff.



Coordination of resources on complex projects – both people and equipment – requires continuous communication at all levels, whether in daily site safety meetings, survey crews connecting with foremen and supervisors, or technical coordination between office teams. Timely, open and straightforward communication is critical to safe, efficient, and quality operations.

Managing relationships with contractors and suppliers, which number in the 100s for a project of this size, is also crucial. It takes exceptional project management skills, which the GeoVerra team has in spades with many members having over 20+ years' experience. With recent supply chain issues, attention to even the smallest details – like sourcing quality stakes and paint pens to withstand the effects of weather and harsh environments – can impact project timelines. GeoVerra's acute attention to detail and transfer of deliverables has been key to ensuring that project deadlines are met and client expectations are exceeded.

The partnership between GeoVerra and TMEP runs deep, with relationships built between individual team members at all levels from Field Supervisors, Crew Chiefs, and Technical Staff up through Project Managers, Senior Party Chiefs and Directors. These relationships are invaluable to efficient operations and extend beyond the workday to become trusted friendships that have grown in parallel with career trajectories spanning decades.

Deliverables

- Establishing a project-wide control network of points along the pipeline using GIS
- Creation and maintenance of base plan maps with cadastral/parcel boundaries, including integration of field data for continuous boundary refinement
- Creation and maintenance of a parcel database with all landowners and related tract information
- Ownership sketches and right of entry plans to support land acquisition
- Field survey and plan preparation of watercourse, road, highway, buried and overhead utility crossings for detailed engineering and third-party permitting purposes
- Extensive line locating and topographical surveys
- Field survey, plan preparation and registration of various legal plans
- Ongoing GIS services to modify and maintain the Access Road Network through the implementation of approved management of change (MOC)
- Delivery of spatial geodatabases on a regular basis
- Field surveys to identify or confirm third-party crossings for proposed access roads
- Mobile mapping, UAVs, and micro-drones including LiDAR units to fly around confined spaces, like tunnels, safely
- Over 100 GeoVerra individuals involved in management, field supervision, pipe as-built technicians, survey crews, CAD and GIS technicians, an HSE advisor and administrative support
- Automated 24-hour rail and road monitoring
- Pipe tally
- Pipe verification
- Weld mapping
- Lower-in
- Tie ins
- Hydrostatic
- Caliper runs
- Post construction profile on final grade



GeoVerra Team Experience

Transportation / Metrolinx Regional Express Rail



Location: Greater Toronto and Hamilton Area

Client: Hatch (part of the 4TRANSIT Joint Venture)

Services:

- Engineering and legal boundary surveys
- 3D Laser Scanning
- Reference Plans (R-Plan)
- Expropriation Plan
- Survey sketch for compiled boundary

Project Description

Metrolinx is undertaking a transformation of the GTHA GO rail network to expand its services from primarily commuter transport to a fully integrated rapid transit system providing reliable, efficient rail connections. For the first two phases of the RER, GeoVerra supported the joint venture called 4Transit to provide geomatics surveying and inputs on project-specific output specifications (PSOS) in a sub-consultant capacity.

GeoVerra will continue to provide surveying for the third phase starting at the end of 2022 through a new joint venture ONxpress Transportation Partners.

Why GeoVerra?

The RER program has presented several unique challenges to performing the required survey work including populated areas and tight corridors with active electrification. These challenges heightened the safety guidelines and requirements of the project. The GeoVerra survey teams received additional training and worked closely with the onsite flagman personnel to ensure the safety of all workers within the restricted railway corridors.

Throughout the project, GeoVerra has delivered on a range of survey requests involving tight turnaround times and technical challenges that required customized solutions. Being the largest geomatics firm in Canada, GeoVerra can pull survey team resources from other regions enabling delivery on short notice requests. From a technical perspective, GeoVerra owns many of its own advanced technology and equipment but also has solid third-party relationships for other high-tech solution requests. For example, photogrammetric mapping and satellite imagery were used to supplement the traditional topographic surveys.

Outcome

"I like working on challenging projects that get you out of your comfort zone. The RER program with Metrolinx has required a range of surveying techniques from conventional to high-tech, as well as providing strategic input through to quality execution." – Project Manager, Tony Pu, GeoVerra



GeoVerra Team Experience

Industrial / Sturgeon Refinery, North West Redwater Partnership



Location: Sturgeon County, AB

Client: North West Redwater Partnership (NWR)

Services:

- Ground disturbance
- 3D scanning
- Construction surveys
- As-built surveys
- UAV support
- Control surveys and monitoring
- Underground facility database management
- Legal surveys

Project Description

The North West Redwater Partnership (NWR) is a 50/50 partnership between Canadian Natural Resources Limited (CNRL) and the Alberta Petroleum Marketing Commission (APMC). Together, the partnership owns and operates the Sturgeon Refinery, the first refinery of its kind to champion sustainability with carbon capture and bring resources and revenue back to the province through a unique business model.

Project Background

Located 45 km northeast of Edmonton in Sturgeon County, the NWR Sturgeon Refinery is the first refinery designed from the ground up with a carbon capture solution that uses leading technology to maximize performance and minimize environmental impact while producing the high-value, low-carbon products needed to meet North Americans' energy demands.

The Sturgeon Refinery is now fully operational. By capturing carbon emissions produced during the refining process, the new refinery produces lower carbon-intensity fuels from bitumen. The CO₂ is gathered and transported by the Alberta Carbon Trunk Line system to Central Alberta for enhanced oil recovery and permanent safe storage.

Why GeoVerra?

GeoVerra has been providing a variety of services to the Sturgeon Refinery since the construction of the facility began in 2013. The team continues to be involved, providing ongoing survey and line locating support.

As one of Canada's largest geomatics firms, GeoVerra is the market leader in advanced customized survey solutions for a wide variety of construction projects. Our team of licensed land surveyors and project managers are focused solely on achieving client objectives to provide seasoned expertise you can rely on – it's the GeoVerra partnership promise.



GeoVerra Team Experience

Sustainable Energy / Neoen Fox Coulee Solar Farm



Location: Fox Coulee, Alberta

Client: Neoen / Goldbeck Solar

Services:

- Original ground topographic surveys
- Buried utility locating
- Machine control establishment and support for grading operations
- Layout and as-built of earthworks (roads, trenching, and grading)
- Layout and as-built of piles (solar array foundations, inverters, and combiner boxes, etc.)
- Pile cut and cap support for inverters, the O&M building, and E-house piles

Project Overview

- Fox Coulee is a 93 MW solar project located north of the Drumheller airport in Starland County, Alberta. It is being developed by one of the world's leading producers of renewable energy, Neoen, and is their first asset in Canada.
- The solar farm is scheduled to be operational in 2024. At that time, it is expected to generate enough clean electricity to power over 20,000 homes and prevent the emission of approximately 70,000 tonnes of CO2 a year.
- GeoVerra is providing geomatics support to the project throughout its construction

Why GeoVerra?

GeoVerra's practical experience and industry experts set their team apart when handling challenging projects. Earthworks, piling, and infrastructure are key areas in solar development that require experts and reliable services and solutions. Most of all, their team's strength lies in being adaptable.

An extra edge lies in GeoVerra's top-of-the-line equipment, like the Trimble R12i GNSS receiver, a staple for all field crews.

Outcome

The GeoVerra team played a crucial role in the early stages of the project, establishing secure boundaries, storage areas, and roads. They also successfully managed the surveying of trenching for electrical cables spanning over 30 kilometers, connecting solar arrays to combiner boxes and inverters.

Learn more about the collaboration on this project [here](#).



GeoVerra Team Experience

Utilities / Hydro One Project



Location: Lake Superior, ON

Client: Hydro One

Services:

- Forestry services:
- Private land
- Woodlot
- Shelterbelt timber valuations
- Field assessment
- Property report (using local valuation methodology)

Project Description

This project was a rapidly planned submission by Hydro One to compete for the 350-kilometre Lake Superior Link route in the summer of 2018.

The route ran from Thunder Bay, east to Wawa, Ontario and covered both Crown, private land and woodlots. Ultimately, a competing utility company built the line but the initial preparation work for valuation reporting and timber valuation was completed by our forestry team and legacy company, Altus Group.

Why GeoVerra?

Through legacy company, Altus Group's Valuation team, GeoVerra was engaged to provide valuation on the timber along this 350-kilometer planned utility line from Thunder Bay to Wawa, Ontario in 2018.

Primary Services

Through legacy company, Altus Group's Valuation team, GeoVerra was engaged to provide valuation on the timber along this 350-kilometer planned utility line from Thunder Bay to Wawa, Ontario in 2018. GeoVerra's team is currently working on the extension of this line running west from Thunder Bay, Ontario.

GeoVerra provided professional forestry services. Determining the value of timber impacted by the project on private land or woodlot, considering species, volume, purpose, and other intrinsic values. Our forestry professionals conduct the field assessment and prepare a detailed report for each property using local timber valuation methodology. The reports are reviewed and stamped by a local timber valuation professional.





To learn more about GeoVerra's partnership promise and our commitment to provide responsive, trustworthy service with a solutions-oriented approach, visit our website, email us at info@geoverra.com, or contact your local office to speak to one of our industry experts.

geoverra.com |   